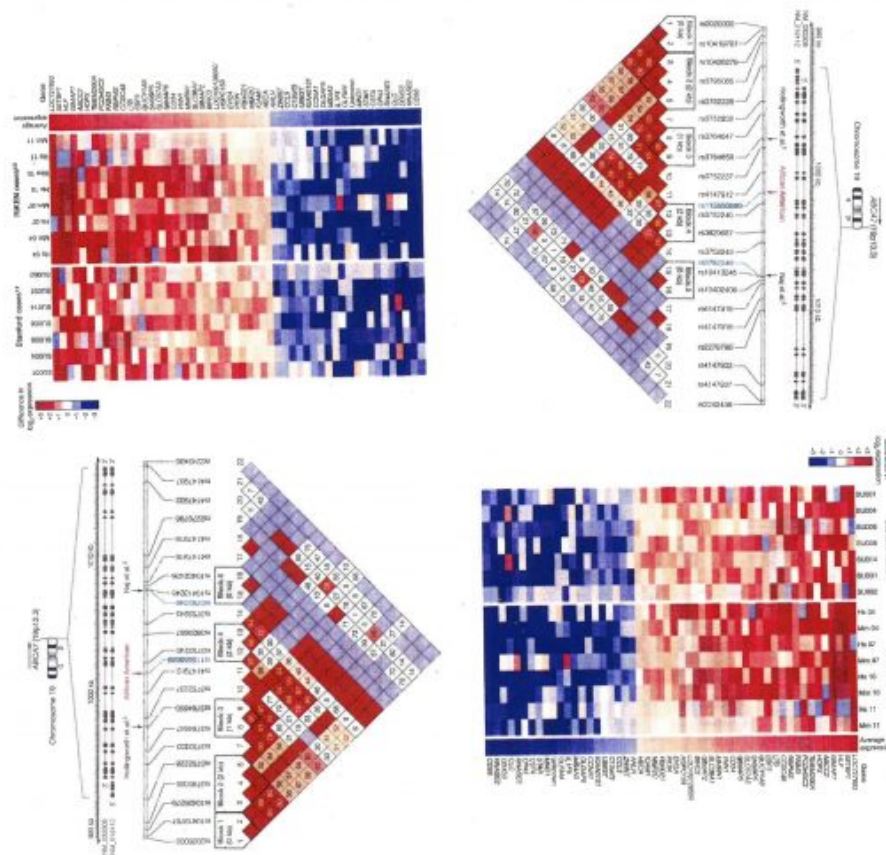


# Data Art 2

Category: visuals

written by Alan Blum | November 17, 2017



Alan Blum

## About the contributor:

Alan Blum is a professor and Gerald Leon Wallace MD Endowed Chair in family medicine at the University of Alabama School of Medicine in Tuscaloosa. A self-taught artist, he has published three books of his sketches and stories of patients, and his artworks have appeared in more than a dozen medical journals and textbooks. Many of his sketches have appeared in [Pulse](#). He is a frequent guest speaker at medical schools in courses in the humanities.

## About the artwork:

"For the past five years, on the first Thursday evening of each month, I have hosted an Art of Medicine Rounds for medical students, residents and faculty, at which I often distribute a story or poem from *Pulse* or else one of *JAMA*'s 'Art and Medicine' or 'A Piece of My Mind' essays.

"Above and beyond being a devoted reader of *JAMA*, I am especially drawn to the illustrations, tables and figures in its original scientific articles. I confess that the content is often over my head. But I feel that many of these figures can stand alone as works of art. The two images that comprise this visual originally appeared in two *JAMA* articles. The top figure is entitled 'Differences in Gene Expression Between LPC- and LSC-Enriched Subpopulations'

(1); the lower figure is 'Linkage Disequilibrium Pattern of Single-Nucleotide Polymorphisms in ABCA7 Based on the HapMap Reference Sample (African Americans in the Southwest USA) and NCBI36/hg18 Genome Build' (2).

"In or out of context, I find them simply beautiful."

1. Gentles AJ, Plevritis SK, Majeti R, Alizadeh AA. Association of a leukemic stem cell gene expression signature with clinical outcomes in acute myeloid leukemia. 2010;304(24):2706-2715. **Reproduced with permission from JAMA. Copyright c 2010 American Medical Association. All rights reserved.**
2. Reitz C, Jun G, Naj A, et al. Variants in the ATP-binding cassette transporter (ABCA7) apolipoprotein E e4, and the risk of late-onset Alzheimer disease in African Americans. *JAMA*. 2013;319(14):1483-1492. **Reproduced with permission from JAMA. Copyright c 2013 American Medical Association. All rights reserved.**

**Visuals editor:**

Sara Kohrt